

Co-designing videos to promote recruitment for the MOOSE randomised controlled trial

Steven Blackburn¹, Mike Brooks², Clare Jinks³, Caroline Rick⁴, Sarah McClure⁴, Chloe Dyche⁴, Gail Burbage⁵, Yuanfei Su⁴, Trish Hepburn⁴, Shabina Sadiq⁴, Shelby Castle⁴, Arfan Ali⁴, Alice Faux-Nightingale³, Matt Stevenson⁶, Karim Raza¹, Christopher Edwards⁷, Christian D Mallen³, Alan Montgomery⁴, Abhishek Abhishek⁸.

1. University of Birmingham 2. Public co-applicant, Keele University & Midlands Partnership NHS Foundation Trust 3. Keele University 4. Nottingham Clinical Trials Unit, University of Nottingham 5. Nottingham University Hospitals 6. The University of Sheffield 7. University Hospitals Southampton 8. Academic Rheumatology, School of Medicine, The University of Nottingham.

Background

- Videos are increasingly being used to improve recruitment into clinical trials
- Exploring effective video use in trial recruitment is a priority area (Parker et al, 2024).
- The study's public co-applicant suggested embedding video(s) into trial documentation to help participants understand the study better.

Aim: Patient & Public Involvement

- To co-design recruitment videos and link them to the MOOSE participant information leaflet (PIL)

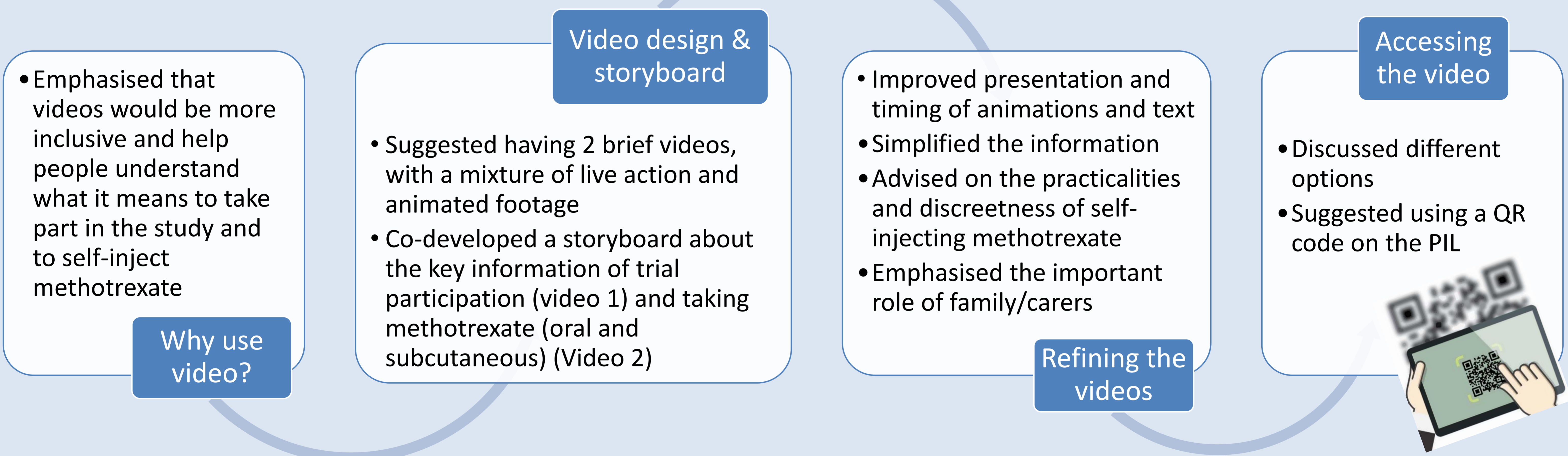


The MOOSE Study is a randomised controlled trial comparing the effectiveness of oral versus subcutaneous self-administration of methotrexate for patients with new onset rheumatoid arthritis

Methods of Patient & Public Involvement

- Three co-design meetings with 6 members of a **Patient Advisory Group (PAG): 6 people (4 female/2 male)** with lived experience of rheumatoid arthritis
- PAG members worked with the study team to co-design a video storyboard, refine videos, and discuss options to access the video from the PIL
- Public contributors received payment, support and prompt feedback

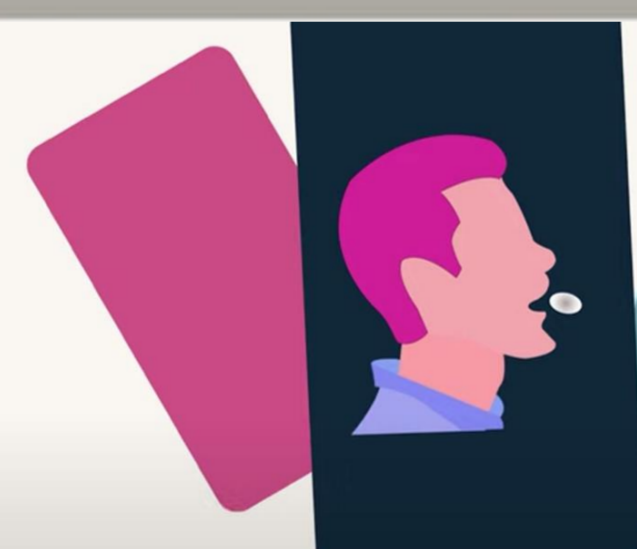
How the Patient Advisory Group made a difference



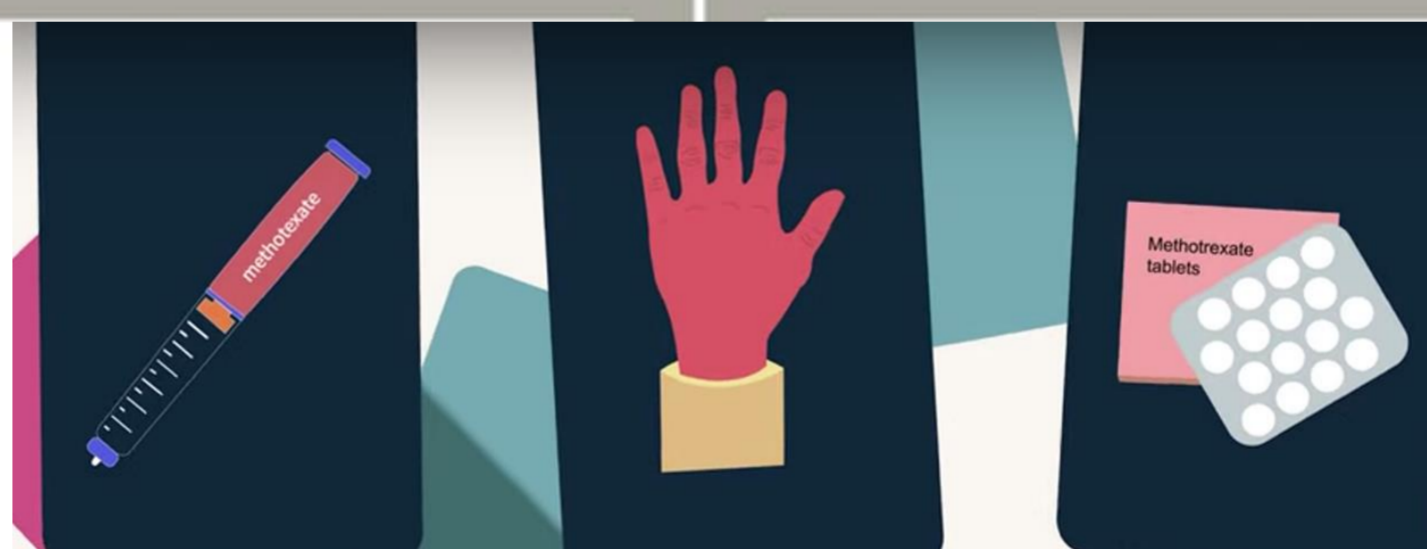
Living with rheumatoid arthritis



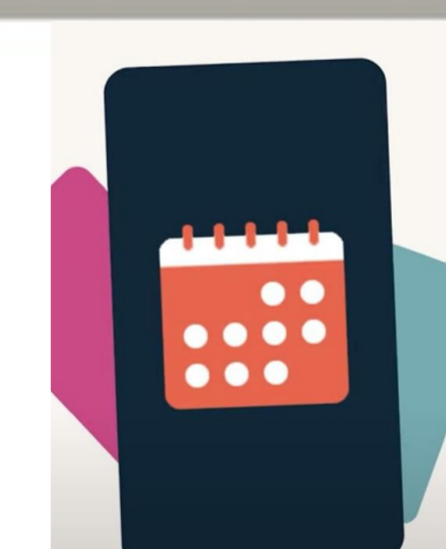
Most people find tablets easier to take but they can cause tummy upsets. Injections may work better and don't upset the tummy.



What is the research about?



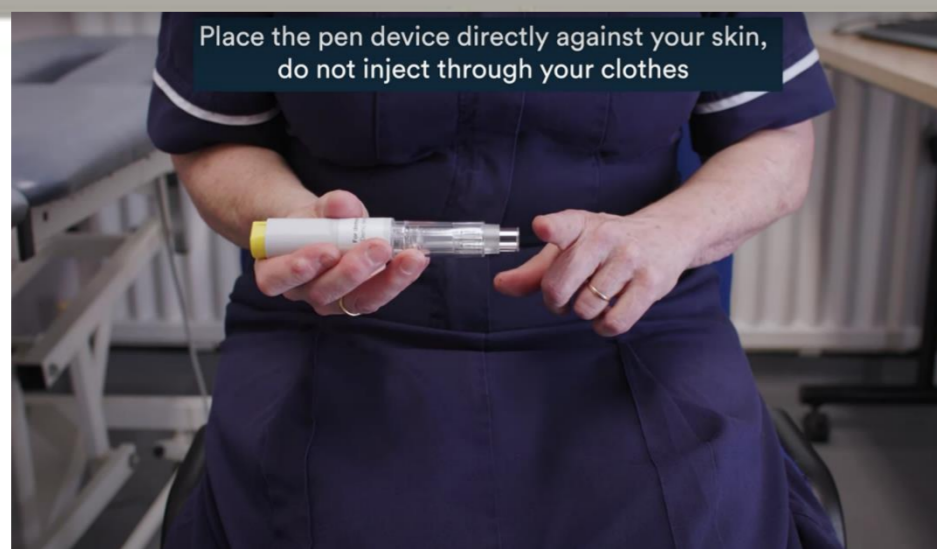
What do I have to do



If you decide to take part, please contact the local research team to arrange your first study visit. You will be asked to return for further follow up visits around

- 3 months
- 6 months
- 12 months.

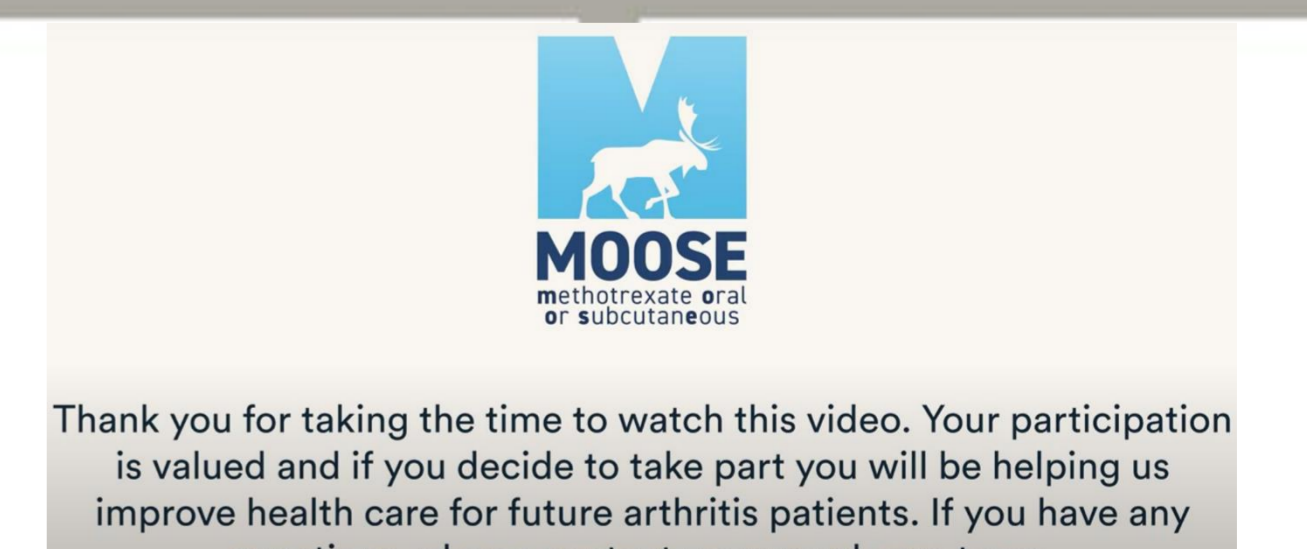
How to take the medication



Things you should be aware of



Your participation is valued



Conclusions

- People with rheumatoid arthritis made important contributions during a creative and engaging co-design process
- The effectiveness of the co-designed videos for improving recruitment rates is being currently explored in a Study Within a Trial (SWAT) embedded in the MOOSE Study